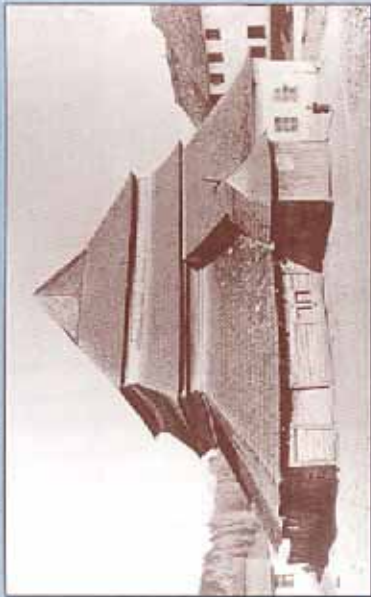


COMMON HERITAGE:
The Wooden Synagogues of Poland

A Series of Events Celebrating Jewish
Architecture and Culture in Poland and America



PROGRAM SPONSORS

Polish Center of Wisconsin

UWM Center for Jewish Studies

UWM School of Architecture and Urban Planning

Wisconsin Society for Jewish Learning, Inc.

Funding for this program has been made possible
through the generosity of the Helen Bader Foundation.

PATRONS

Cynthia and Joseph Rawolinski
Nathaniel K. Zelazo

CO-SPONSORS

Handshouse Studio
Hillel Foundation - Milwaukee
Milwaukee Jewish Historical Society
Polanki, the Polish Women's Cultural Club of Milwaukee
UWM, Golda Meir Library
UWM, Department of Architecture

Celebrate 350: Jewish Life in America, 1654-2004

FOR MORE INFORMATION, CONTACT:

Polish Center of Wisconsin: 414-529-2140

UWM Center for Jewish Studies:
414-229-6121 or susanjb4@uwm.edu

UWM School of Architecture and Urban Planning:
414-229-4014

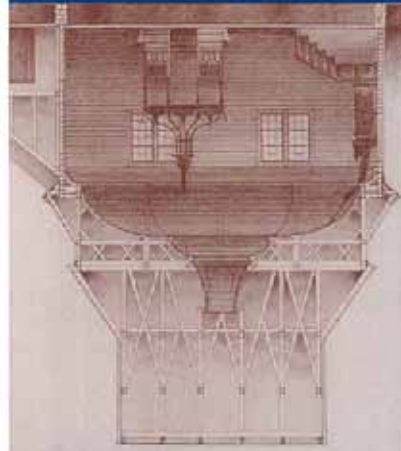
Wisconsin Society for Jewish Learning, Inc.: 414-963-4135

Nonprofit Org.
U.S. POSTAGE
PAID
MILWAUKEE, WI
Permit No. 864

School of Architecture and Urban Planning
Department of Architecture
PO Box 413
Milwaukee, WI 53201-0413



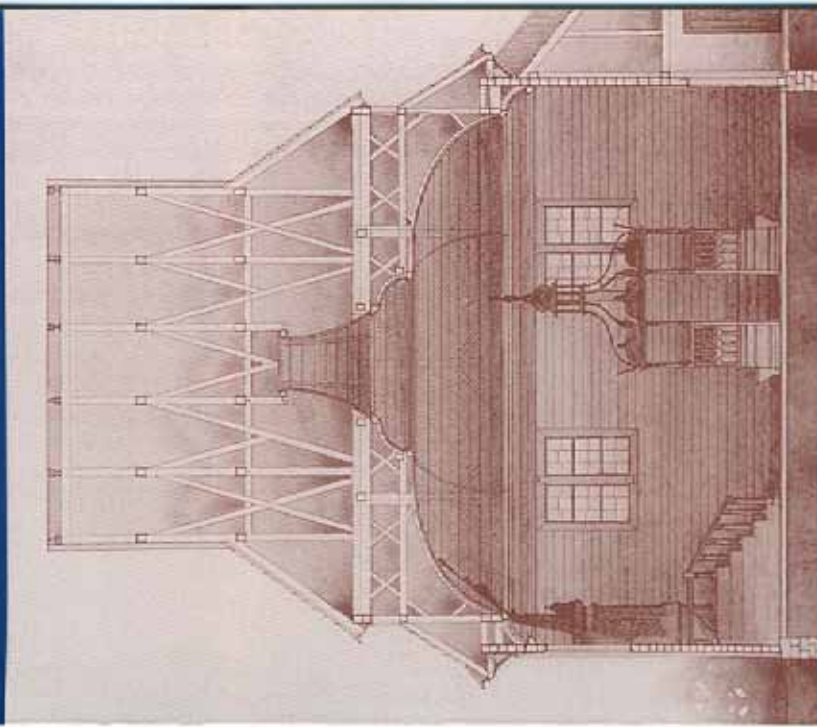
COMMON HERITAGE:
The Wooden Synagogues of Poland



For more information,
Please call: 414-229-4014

COMMON HERITAGE:
The Wooden Synagogues of Poland

A Series of Events Celebrating Jewish
Architecture and Culture in Poland and America



Polish Center of Wisconsin

UWM Center for Jewish Studies

UWM School of Architecture and Urban Planning

Wisconsin Society for Jewish Learning, Inc.

OCTOBER 20 - 24, 2004

COMMON HERITAGE: The Wooden Synagogues of Poland

A Series of Events Celebrating Jewish Architecture and Culture in Poland and America



This program explores the architecture of the Polish synagogue and its influence in America and highlights the shared experience of the Jewish and Polish people.

WEDNESDAY, OCTOBER 20

The Joinery of the Synagogues:

A Timber Framing Demonstration

Master millwright James Krickler will demonstrate the log hewing techniques and timber joinery used in Polish wooden synagogues.

LOG HEWING DEMONSTRATION

10:00 am, Commons Area, 1st Floor, Architecture Building, UWM

LECTURE

Timber Joinery, East and West

12:00 noon, Room 110 (adjoining Commons Area)

TIMBER JOINERY DEMONSTRATION

2:00 pm, Commons Area, 1st Floor, Architecture Building, UWM

LECTURE

The Synagogue and Community of Zabłudow:

Life in the Shtetl

Tilford Bartman, historian of the Zabłudow Jewish Community

4:00 pm, Room 110, Architecture Building, UWM

The session will feature the hewing of a framing member to be used in the reconstruction of the Zabłudow Synagogue. This synagogue is the focus of an international campaign to reconstruct a full-scale replica of a wooden synagogue in Poland.

THURSDAY, OCTOBER 21

Annihilated Heritage: The Wooden Synagogues of Poland

An architectural exhibition documenting the destroyed wooden synagogues of pre-war Poland will be shown at the Polish Center of Wisconsin. The wooden synagogues were once focal points for Jewish communities from the small towns or shtetls of Poland. The destruction of these towns and their Jewish populations by the Nazis makes the record of these synagogues one of the few surviving documentations of these Jewish communities.

Zabłudow Synagogue Model

The exhibition will also feature a large 4'x4' model of the wooden synagogue from Zabłudow Synagogue. The model was constructed by Handshouse Studio, a not-for-profit educational organization in association with Massachusetts College of Art, Wentworth Institute of Technology, and Wheelock College, Boston, MA. The model was built to promote the construction of a replica of the Zabłudow Synagogue in Poland.

EXHIBITION OPENING/VIEWING

6:00-7:00 pm

Polish Center of Wisconsin, 6941 S. 68th St., Franklin, WI
The exhibition will be on display from October 21st to November 24th.

JOINT LECTURE AND SLIDE PRESENTATION

7:00-8:00 pm

Introduction: Witold Karwowski, Association of Historic Monuments Conservators, Poland and USA

Polish Wooden Synagogues: Jewish Architecture in Polish Context

Thomas C. Hubka, Professor, Department of Architecture, UWM

Rescued Heritage: The Restoration of Synagogues in Poland

Samuel D. Gruber, Director, Jewish Heritage Research Center, Syracuse, NY

RECEPTION

8:00 pm, Klezmer music, Polish-Jewish hors' d'oeuvres (Kosher)

FRIDAY, OCTOBER 22

The Architectural Symbolism of the Synagogue

JOINT LECTURE AND SLIDE PRESENTATION

4:30 pm, Room 170, Architecture Building, UWM

Contrasting Symbolisms of the Polish Wooden Synagogues

Thomas C. Hubka, Professor, Department of Architecture, UWM

Modern Synagogue Architecture: Between Memory and Innovation

Samuel D. Gruber, Director, Jewish Heritage Research Center, Syracuse, NY

EXHIBITION OPENING

Resplendent Synagogue: The Architecture of a Polish Synagogue

Architecture Gallery, Architecture Building, UWM

RECEPTION

5:30-6:00 pm, Klezmer music, Polish-Jewish refreshments (Kosher)

SUNDAY, OCTOBER 24

The American Synagogue and Jewish Identity: From Old World to New

Samuel D. Gruber, Director, Jewish Heritage Research Center, Syracuse, NY

The lecture and slide presentation will interpret the form and meaning of the American synagogue as a reflection of Old World traditions and New World opportunities in the shaping of Jewish identity in America.

LECTURE AND RECEPTION

2:00 pm, reception to follow (Kosher)
Golda Meir Library Conference Center, 4th Floor, Golda Meir Library, UWM